

# Les systèmes et les appareils du corps humain

# Les caractéristiques des systèmes et des appareils

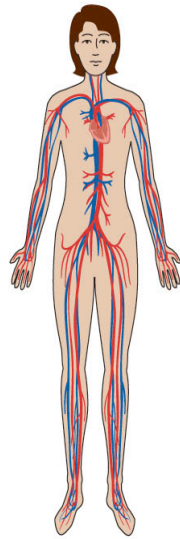
- ❖ 1. Un **système** ou un appareil est composé de parties individuelles qui fonctionnent ensemble.
- ❖ 2. Un système ou un appareil est habituellement lié à d'autres systèmes ou d'autres appareils.
- ❖ 3. Si une partie du système ou de l'appareil est absente ou endommagée, le système ou l'appareil ne fonctionnera pas bien ou pas du tout.

# Les systèmes et les appareils du corps humain

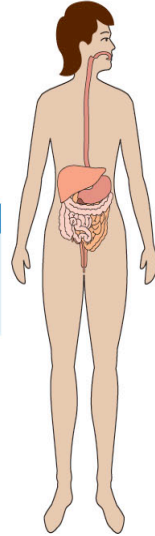
- ❖ Cardiovasculaire (circulatoire)
- ❖ Digestif
- ❖ Respiratoire
- ❖ Urinaire
- ❖ Immunitaire
- ❖ Endocrinien
- ❖ Reproducteur
- ❖ Tégumentaire
- ❖ Osseux
- ❖ Musculaire
- ❖ Nerveux

# Introducing the Systems of the Human Body

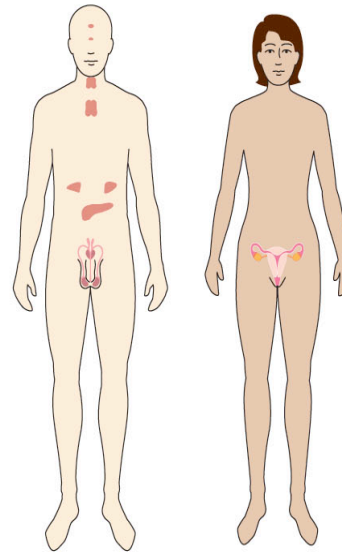
Figure 2.3 Eleven systems of the human body



**Circulatory System**  
Transports blood, nutrients (chemicals needed for survival), gases, and wastes.

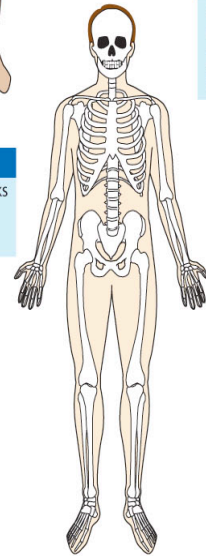


**Digestive System**  
Takes in food.  
Breaks down food.  
Absorbs nutrients.  
Eliminates solid waste.



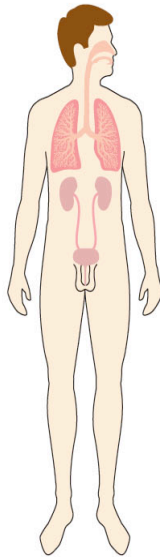
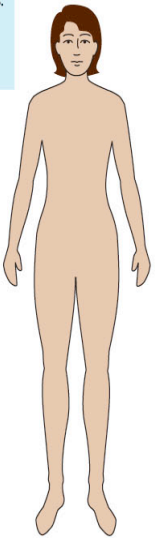
**Endocrine System**  
LEFT: Manufactures and releases hormones.

**Reproductive System**  
RIGHT: Includes reproductive organs for producing offspring.



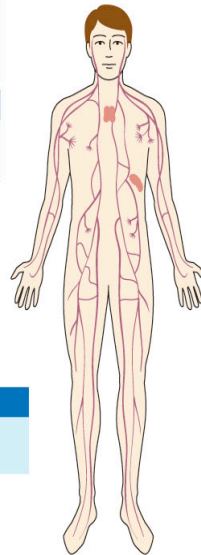
**Skeletal System**  
Supports, protects, and works with muscles to move parts of the body.

**Integumentary System**  
Includes skin, hair, and nails. Creates a waterproof protective barrier around the body.

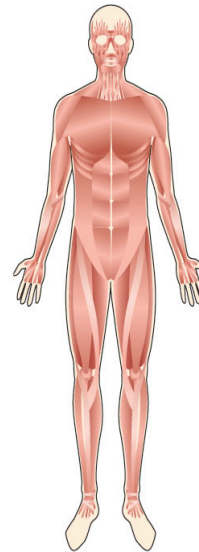


**Respiratory System**  
Controls breathing. Exchanges gases in lungs and tissues.

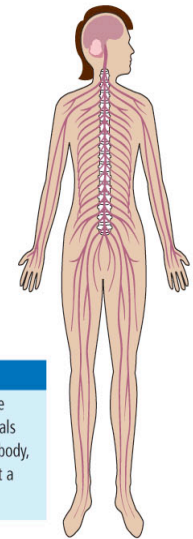
**Excretory System**  
Removes liquid and gas wastes from the body.



**Immune System**  
Defends the body against infections.



**Muscular System**  
Has muscles that work with the bones to move parts of the body.



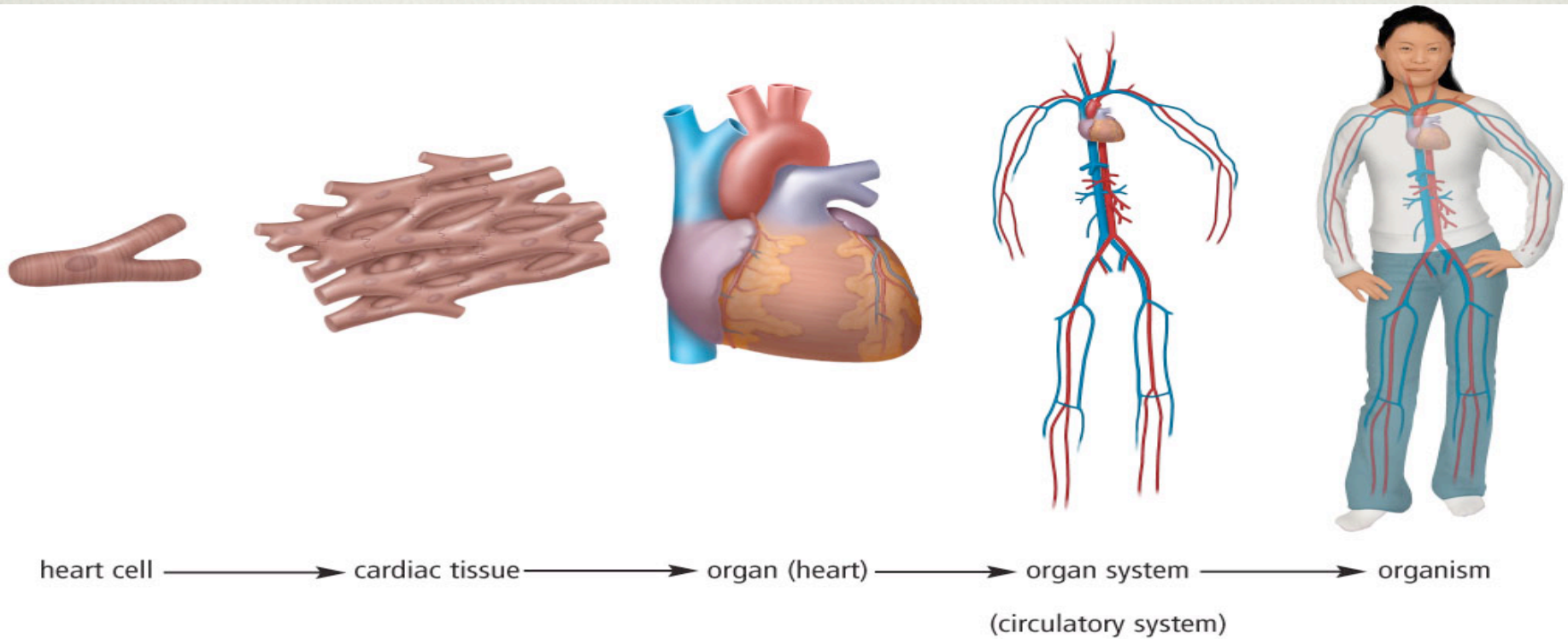
**Nervous System**  
Detects changes in the environment and signals these changes to the body, which then carries out a response.

**internet connect**

To see an interactive, three-dimensional body, go to [www.bcscience8.ca](http://www.bcscience8.ca).

# Les systèmes corporels

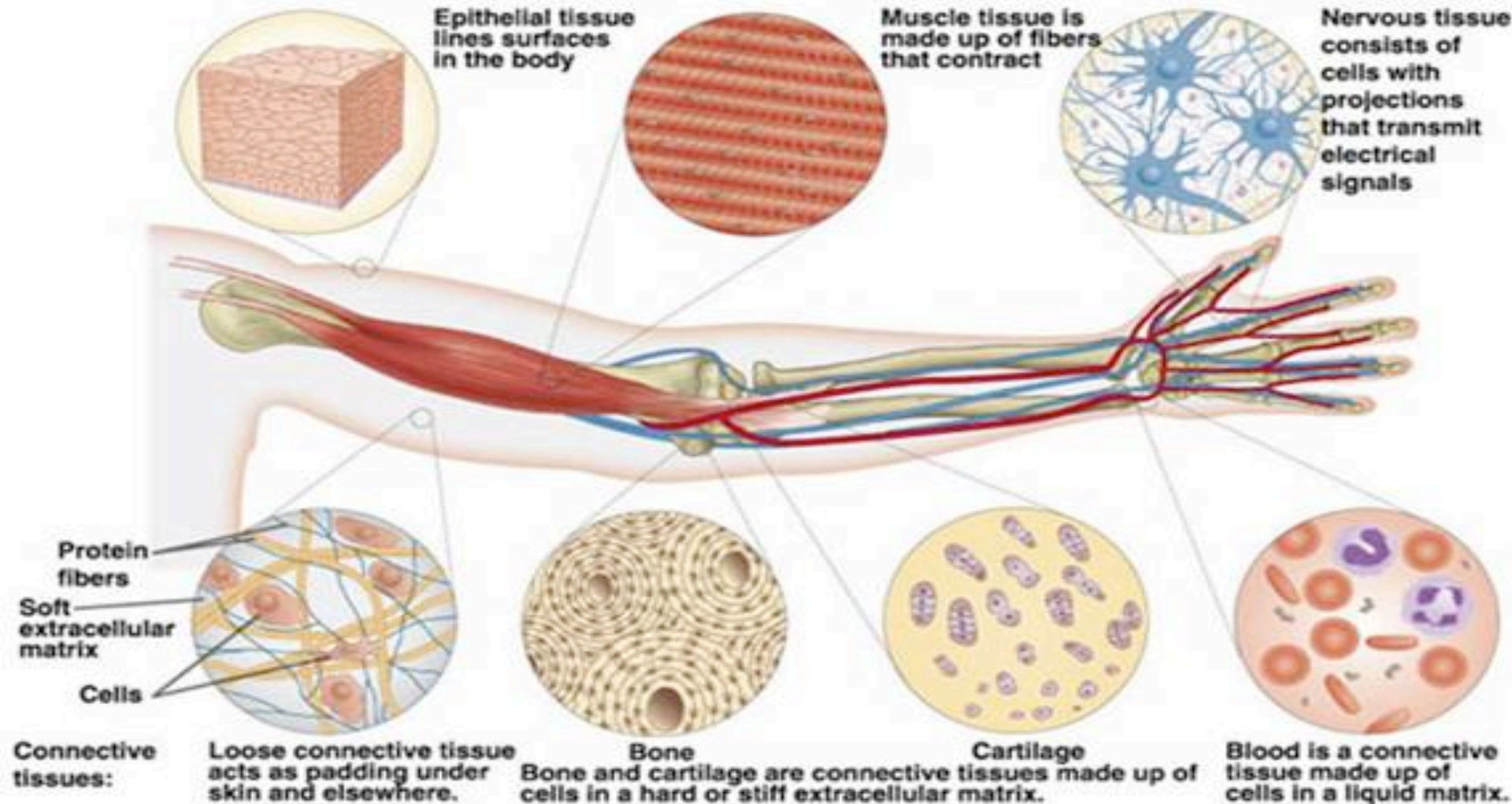
- ❖ Comprend un ou plusieurs organes qui remplissent des fonctions spécifiques du corps
- ❖ Ex: la coeur fait partie du système cardiovasculaire



**Figure 2.4** The cell is the basic unit of life. Cells working together make up tissue. An organ consists of several types of tissues working together to perform a task, such as the pumping of blood by your heart. Organs working together make up an organ system.

# Les tissus

- ❖ groupe de cellules ayant une structure et une fonction communes (Ex: tissus musculaires)



# Les organes

- ❖ Groupe de tissus (ex: les tissus cardiaques) qui assurent le même fonctionnement (comme le pompage du sang)

