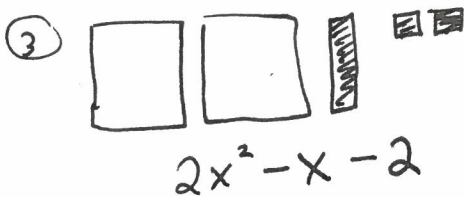
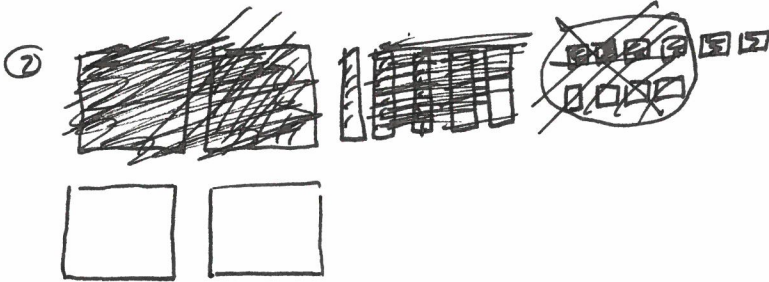
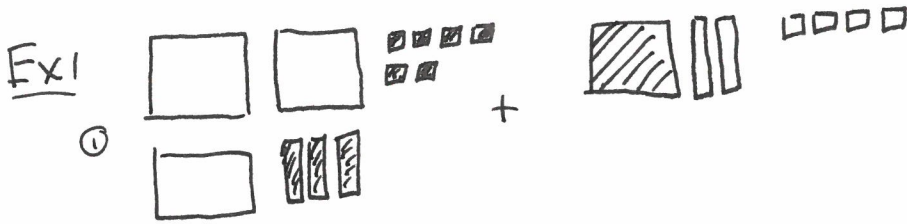
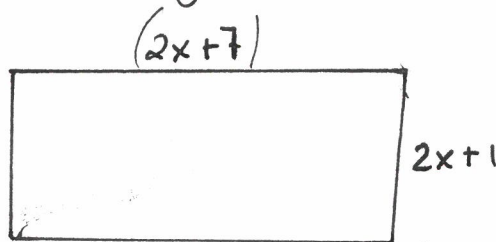


5.3 Additionner les polynômes

Le 8 mars,
2016



Ex2: Soit le rectangle:



Écrire une expression algébrique pour trouver le périmètre:

$$\begin{array}{r} 2x + 7 \\ 2x + 7 \\ 2x + 1 \\ + 2x + 1 \\ \hline 8x + 16 \end{array}$$

(*) pas la méthode recommandée.

si $x = 4$ Solutionne:

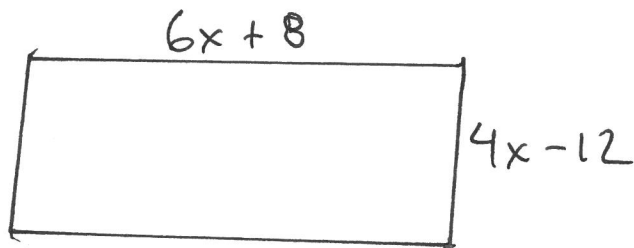
alors.

$$\begin{aligned} & \text{si } x = 4 \\ & = 8(4) + 16 \\ & = 32 + 16 \\ & = 48 \end{aligned}$$

$$\text{Ex 3: } (\cancel{7x} + 14) + (-\cancel{6x^2} - \cancel{7x} - 15)$$

$$= -6x^2 - 1$$

Ex 4:



Trouve le périmètre

$$\begin{array}{r} 6x + 8 \\ 6x + 8 \\ 4x - 12 \\ + 4x - 12 \\ \hline 20x - 8 \end{array}$$

$$\underbrace{6x + 8} + \underbrace{6x + 8} + \underbrace{4x - 12} + \underbrace{4x - 12} = 20x - 8$$

S. 3 p. 228
3, 5ac, 6ac, 7, 9acag, 10a